



PLUG-AND-PLAY AGITATORS FOR IEC CONTAINERS

Ideal solution for IBC containers | Suitable for Ø100 entrance | Manipulable with forklift



AGITATOR SELECTION:

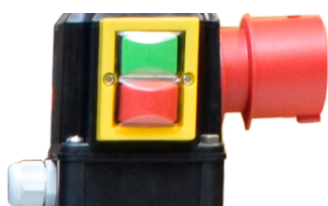
For a better selection of the Agitator it is necessary to take into account the Density and Viscosity of the product, and to know the type of agitation required so that the mixing time is optimal.

Speed RPM	Agitation	Mixed	Mixing time	Element	Photo
100	Soft	Dissolution	30-60 min.	Axial Turbine	
200	Medium	Dissolution	15-45min.	Axial Turbine	
300	Strong	Dissolution	10-30 min.	Axial Turbine	
1500	Very Strong	Dispersion		Marine helix / Cowles disc	
3000	Very Strong	Dispersion		Marine helix / Cowles disc	

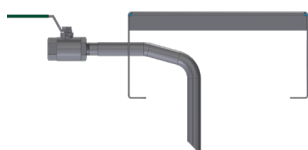
DISSOLUTION : When a solid dissolves in a liquid.

DISPERSION : When a solid does NOT dissolve in a liquid.

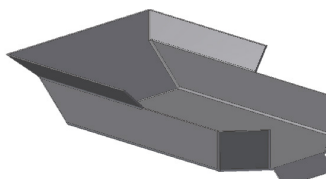
START / STOP WITH CETAC



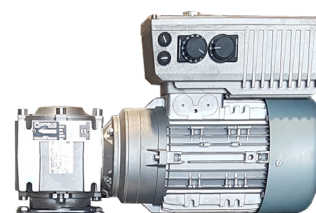
LIQUID ADDITION TUBE



SOLID ADDITION HOPPER



**FREQUENCY INVERTER
INTEGRATED INTO THE MOTOR**



CHEMICAL - PETROCHEMICAL - PHARMACEUTICAL - FOOD - COSMETIC - INDUSTRIAL

IBC AGITATOR

AGITATOR SELECTION:

For a better selection of the Agitator it is necessary to take into account the Density and Viscosity of the product, and to know the type of agitation required so that the mixing time is optimal.

MODEL	RPM	Power kW	Maximum Density Kg/dm ³	Maximum Viscosity cps	Turbine / Disc
ST-35 100/0.25	100	0.25	2,3	2.000	1
ST-35 200/0.37	200	0.37	1	1.000	1
ST-35 200/0.55	200	0.55	2	3.000	1
ST-35 200/0.75	200	0.75	2,3	5.000	1
ST-35 200/1.5	200	1.5	1.1	10.000	2
ST-35 300/0.75	300	0.75	1	1.200	1
ST-35 300/1.1	300	1.1	1,2	4.000	1
ST-35 300/1.5	300	1.5	1,6	6.000	1
ST-35 300/2.2	300	2.2	1,5	15.000	2
BF-100 1500/0.75	1.500	0.75	1,5	2.000	1
BF-100 3000/1.5	3.000	1.5	1,8	5.000	1



QUALITY



The parts in contact with the product are manufactured in Stainless Steel 316L, the rest of the parts are Stainless Steel 304

EFFICIENCY



IE3 Maximum Efficiency Motors
Nord brand worm gearbox with a service factor of more than 1.8, manufactured in Germany

CERTIFICATES



CE
ATEX - EEx II 2G c IIB T4 Gb (Zone 1 and 2)
FDA Certificate for the Food Industry
ISPM-15 Phytosanitary Certificate packaging